

Huawei Technologies Co. Ltd. 华为技术有限公司	Product version 产品版本	
	UTPS V300R002B610D15SP00C06	
	Product name产品名称: HUAWEI UTPS	Total pages: 共 6页

# HUAWEI UTPS

## UTPS V300R002B610D15SP00C06

### Install Guideline

# HUAWEI UTPS

## UTPS V300R002B610D15SP00C06

### 安装指导书



Huawei Technologies Co., Ltd.

华为技术有限公司

All rights reserved

版权所有 侵权必究

(PCM04T02 V1.0/ IPD-SE V1.0)



## Table of Contents 目 录

1	Hardware Requirements硬件需求.....	3
2	Install Method安装方法 .....	3



## 1 Hardware Requirements 硬件需求

Huawei PST software must run in Windows XP system 32 or 64 bits , Windows vista system 32 or 64 bits, Windows 7 system 32 or 64 bits.

The minimum hardware requirements are below:

RAM: 1G Bytes

Free Disk Memory: 1G Bytes

Graphics: 64M Bytes

Display: At least 1024\*768, 16 colors

The IE version should be over 6.0(include 6.0)

华为 CDMA 移动终端后台软件运行于Windows XP 32或64位, Windows vista32位或64位版本, Windows 7 32位或64位。

硬件最低配置如下:

内存: 1G Bytes

硬盘剩余空间: 1G Bytes

显卡: 64M Bytes

显示器: 1024\*768屏幕分辨率和16位色

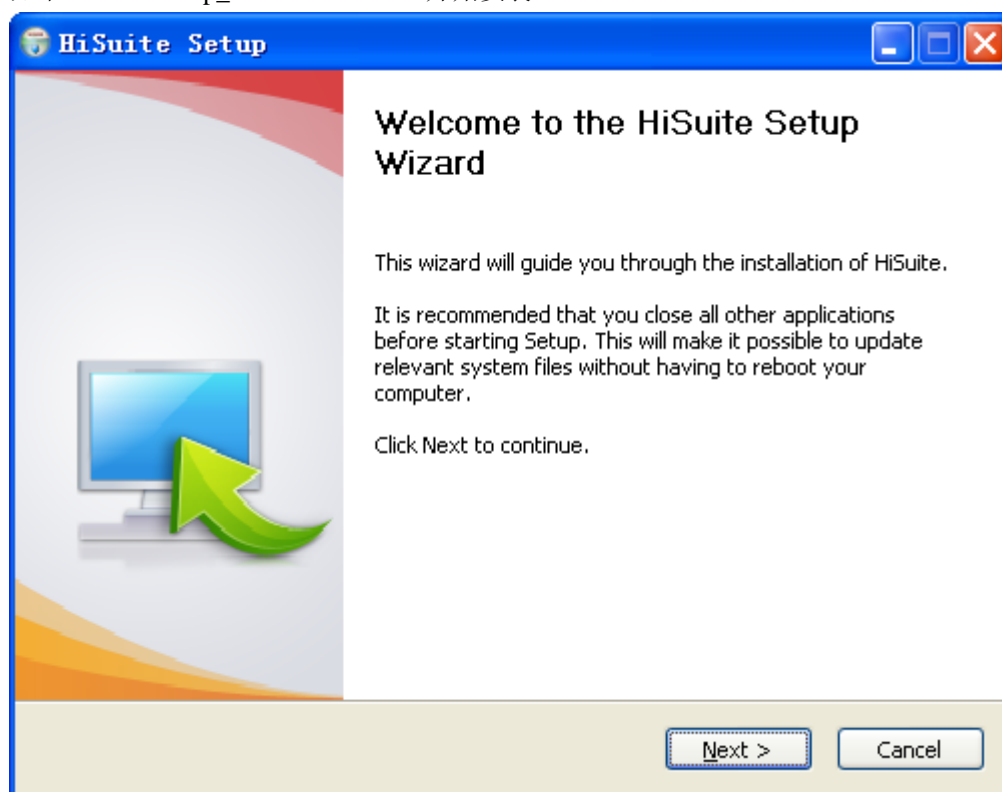
IE版本需要6.0以上 (包括6.0)

## 2 Install Method 安装方法

Double click “HiSuiteSetup\_v1.8.10.1506.exe” to start install.

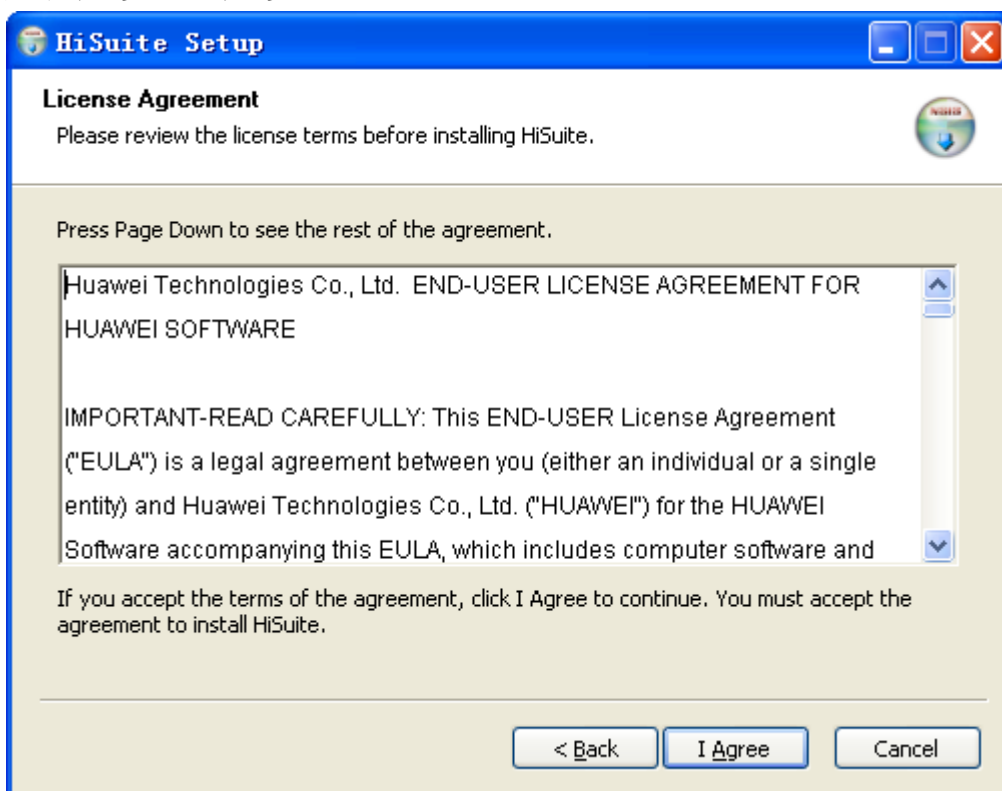


双击” HiSuiteSetup\_v1.8.10.1506.exe”开始安装。



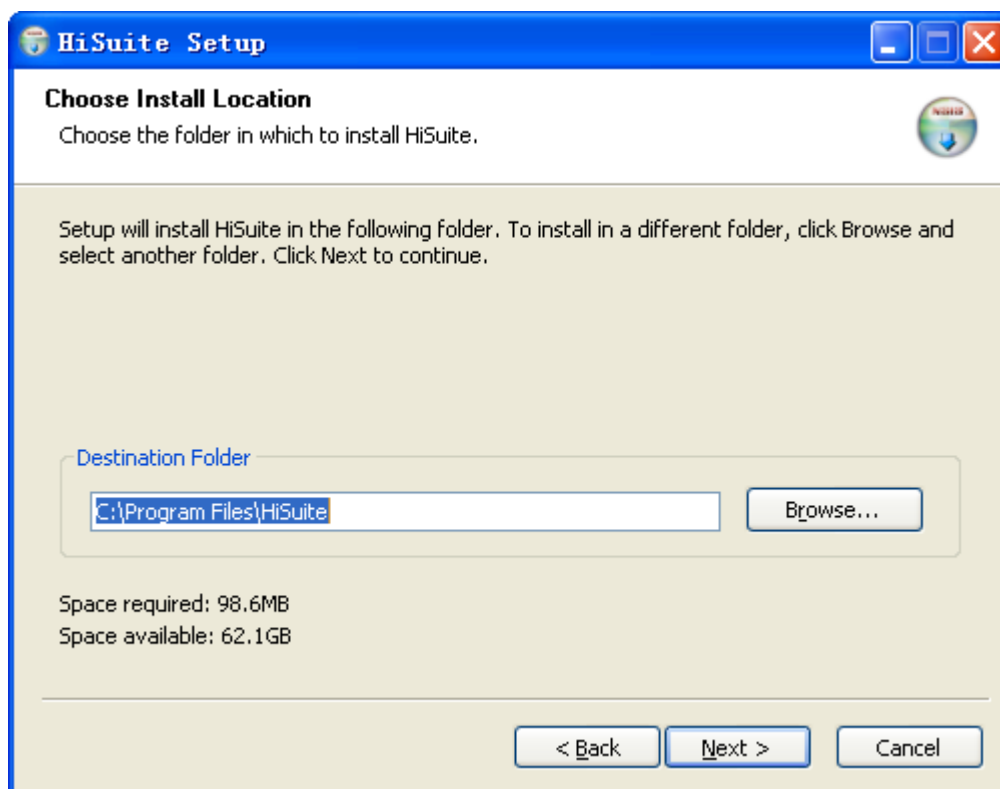
click “next” to enter the next step.

点击“下一步”进入下一步。



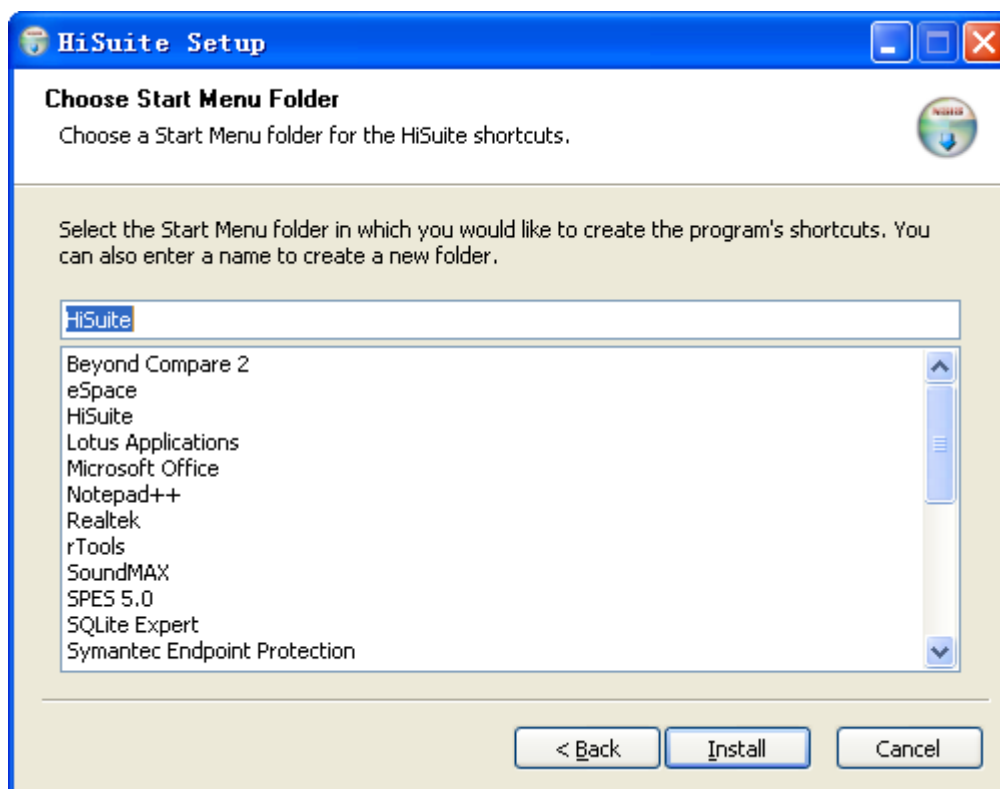
click “I agree” to enter the next step.

点击“我同意”进入下一步。



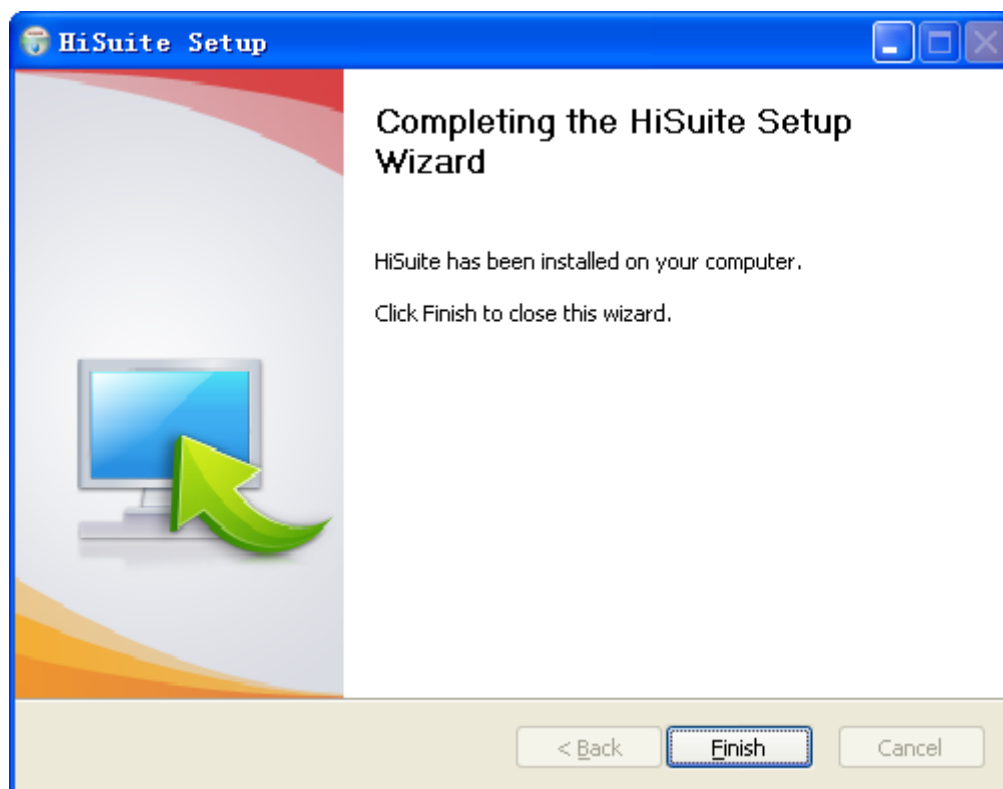
Choose the Destination location ,then click “next” to enter the next step.

选择安装路径，点击“下一步”进入下一步。



click “install” to enter the next step.

点击“安装”进入下一步。



click “finish” to complete installation.

点击”完成” 即完成安装